



lights

AANGENAAMXL

by Marc Poldermans



AANGENAAM XL

High quality. Custom made. Artificial, genuine Dutch craftsmanship.

Our assortment polyester lights:

- dome shaped light (p. 3)
- dome shaped light 'Barock' (with oak leaf decoration; p. 4)
- bullit light (p. 5)
- oval light (p. 6)
- marloes light (p. 7)
- drop light (p. 8)
- earth light (p. 9)
- holes light (p. 10)
- curious light (p. 10)

Finishes

The dome shaped, Barock, Bullit, oval and Marloes lights are available in several surface finishes: aluminium, bronze, concrete/beton, copper, gold rough, gold & silver leaf and a rough structure (all colours).

Colours

The dome shaped, Barock, Bullit oval, Marloes and Drop lights are available in all RAL, Sikkens and Histor colours (matt, glossy & structured).

Depending on the model, you can select numerous combinations of finishes and/or colours to your liking.

CE Declaration of Conformity

Our dome shaped, Barock and Bullit lights meet the requirements of the applicable CE directives.

Please contact us for more information.

AANGENAAM XL by Marc

Oude Kleefsebaan 90

6571 BJ, Berg en Dal



dome shaped lights: in 6 sizes (Ø 60, 80, 100, 140, 170 + 200 cm) & 3 configurations

A light available in 6 sizes which comes in 3 configurations:

1. Basic configuration: a light with an inside and outside where you can select every combination of:
 - RAL, Histor and Sikkens colours (matt, glossy & structured).
 - several finishes (please see page 12 of this brochure) like alu, beton, copper, bronze and gold.
 This enables you to select e.g. a light with an alu outside and bronze inside. Everything is possible!

2. Leaf gold / leaf silver configuration: a light with an inside or outside in leaf gold or silver.
 The other side comes in a colour or finish as described under the basic configuration.

3. Barock configuration (see page 4 of this brochure): a dome shaped light with oak leaf decoration on the inside.
 The outside as described under the basic configuration.

Dome shaped lights:

| | | |
|------------|---------|----------------------|
| * Ø 60 cm | ↓ 29 cm | 7 kg (1 x 60W/E27) |
| * Ø 80 cm | ↓ 39 cm | 9 kg (1 x 60W/E27) |
| * Ø 100 cm | ↓ 45 cm | 11 kg (1 x 60W/E27) |
| * Ø 140 cm | ↓ 60 cm | 15 kg (1 x 100W/E27) |
| * Ø 170 cm | ↓ 68 cm | 25 kg (1 x 100W/E27) |
| * Ø 200 cm | ↓ 80 cm | 32 kg (1 x 150W/E27) |



dome shaped light 'Barock': in 4 sizes (Ø 60, 80, 100 + 140 cm)

A light available in 4 sizes (60, 80, 100 & 140 cm diameter) where:

- the outside can be made in a RAL, Histor and Sikkens colours (matt, glossy & structured) or in a finish (please see page 12 of this brochure) like alu, beton, copper, bronze and gold.
- the inside with Barock decoration can be made in a matt RAL, Histor and Sikkens colours



bullit light: in 3 sizes

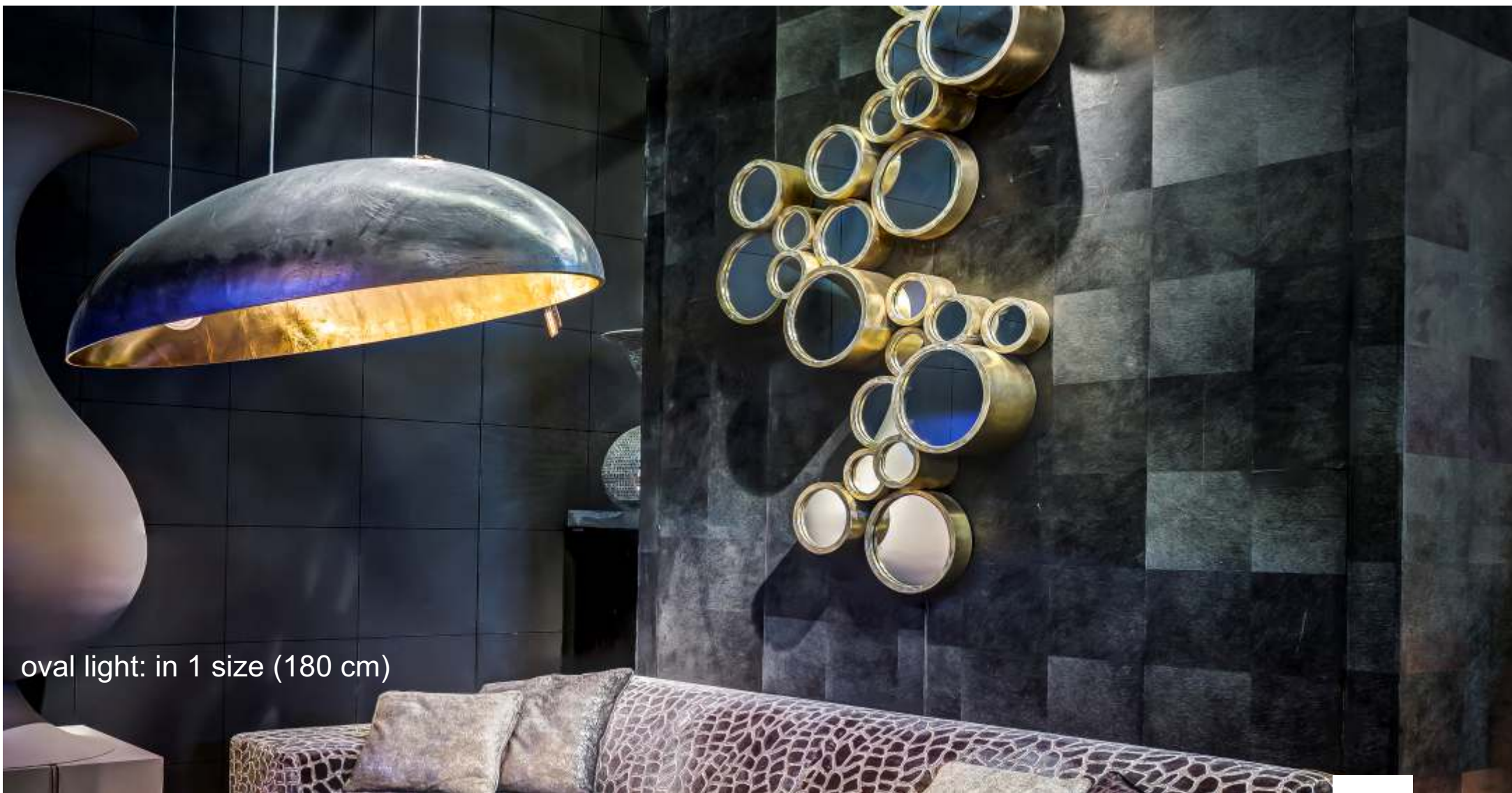
A light available in 3 sizes (25, 35 & 63 cm diameter) where:

- all RAL, Histor and Sikkens colours (matt, glossy & structured)
- several finishes (please see page 12 of this brochure) like alu, beton, copper, bronze and gold
- leaf gold and leaf silver

can be used for both inside and outside. Everything is possible!

Bullit light:

| | | |
|-----------|---------|-----------------------|
| * Ø 25 cm | ↓ 25 cm | 2 kg (1 x 40W/E27) |
| * Ø 35 cm | ↓ 35 cm | 3 kg (1 x 40W/E27) |
| * Ø 63 cm | ↓ 70 cm | 8-9 kg (1 x 100W/E27) |



oval light: in 1 size (180 cm)

A light with an inside and outside where you can select every combination of:

- RAL, Histor and Sikkens colours
- several finishes (please see page 12 of this brochure) like alu, beton, copper, bronze and gold.
- leaf gold / leaf silver

Oval light:

*180 cm †32 cm 14 kg (3 x 100W/E27)





marloes light: in 1 size (Ø 31 cm)

A light with a shiny gold inside and an exterior which can be:

- a RAL, Histor and Sikkens colour
- a finish (please see page 11 of this brochure) like alu, beton, copper, bronze and gold
- leaf gold / leaf silver

Marloes light:

* Ø 31cm ↓23 cm 1-2 kg (1 x 40W/E27)



drop light: in 1 size (Ø 71 cm)

A light with a shiny gold inside. The outside can be made in every matt RAL, Histor and Sikkens colour.

Drop light:

* Ø 71 cm 104 cm 6-7 kg (1 x 100W/E27)



earth light: in 2 sizes (Ø 40 + 70 cm)

The earth light has a brown gold inside and an outside in stonish brown / black or matt Ral colour

Earth light:

* Ø 40 cm 8 kg (1 x 40W/E27)

* Ø 72 cm 15 kg (1 x 40W/E27)



holes light: in 1 size (Ø 37/72 cm)

A light which CAN be made in every matt RAL, Histor and Sikkens colour.

Holes light :

Ø 37/72 cm, H 61 cm 8 kg (1 x 100W/E27)



curious light: in 1 size (110 cm)

A light which be made in:

- every matt RAL, Histor and Sikkens colour
- several finishes (please see page 12 of this brochure) like alu, beton, copper, bronze and gold
- leaf gold and leaf silver

Curious light :

* Ø 37/72 cm, H 61 cm 8 kg (1 x 100W/E27)



Aluminum finish



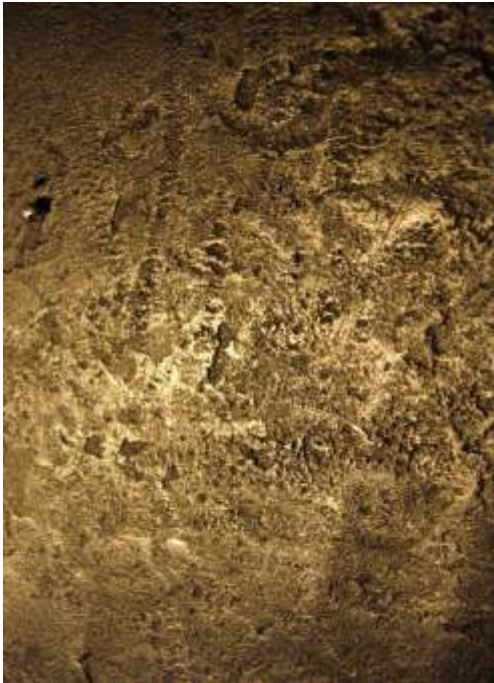
Concrete/beton finish



Gold rough finish



Gold leaf



Bronze finish



Copper finish



Rough finish (all colours)



Silver leaf